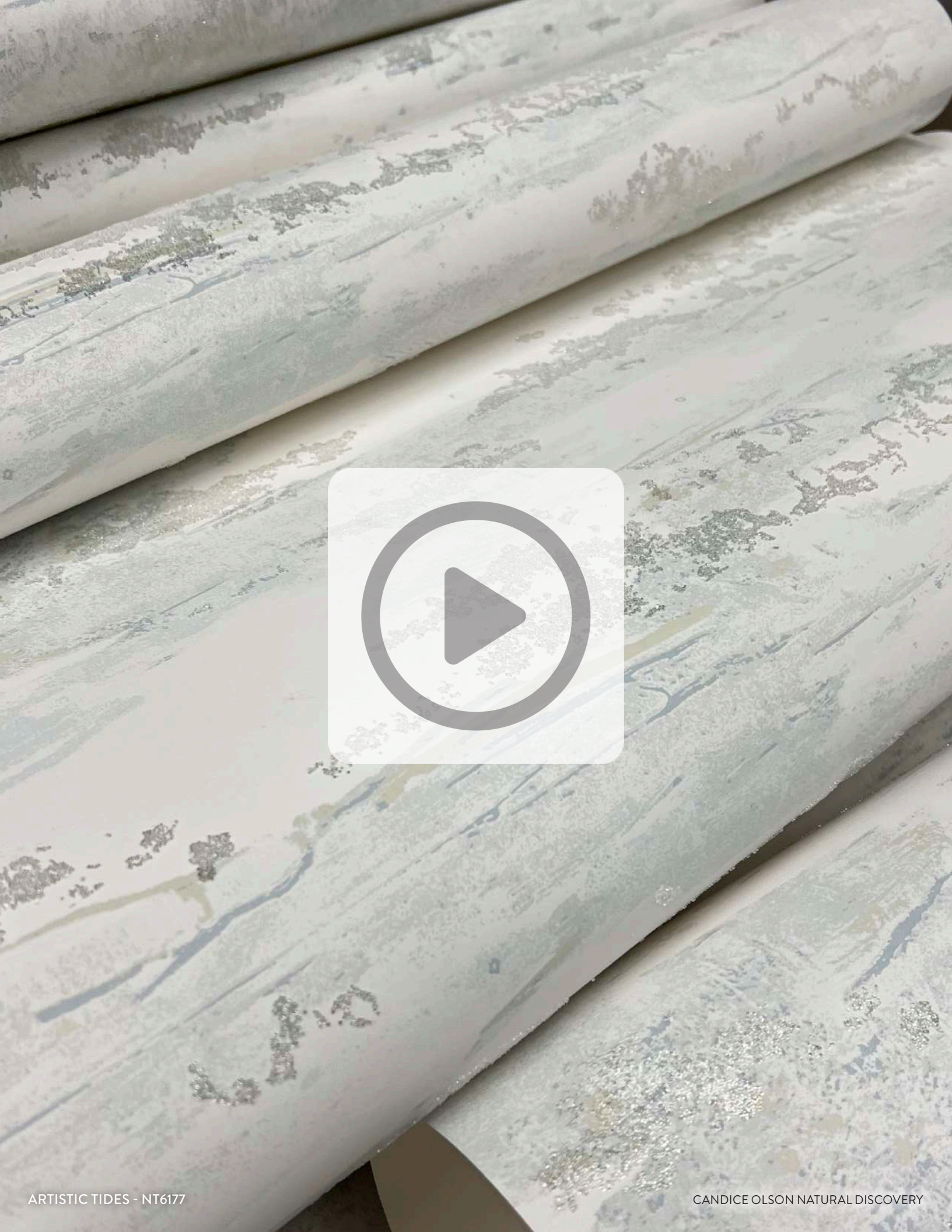




candice OLSON
NATURAL DISCOVERY

YORK
WALLCOVERINGS





candice **OLSON**
NATURAL DISCOVERY

Finding beauty in this extraordinary organic world.



DESIGN & MANUFACTURING

Long recognized for its collective talent, the York Wallcoverings design studio maintains a reputation for innovative styling and fine artistry. With design expertise in all available wallcovering product types including residential, commercial, high performance and peel and stick, York's creative studio staff is in the unique position to layer design, technologies and manufacturing innovations to bring their vision to print reality.

As the exclusive provider of rare Surface Print technologies in North America, and the only manufacturer with all five wallpaper printing types housed under one roof, York stands alone in experience and knowledge among its peers; utilizing authentic, genuine handcrafting and artisanship dating back over more than a century.

It is this design heritage which defines York Wallcoverings portfolio as the most diverse within the wallcoverings industry today. York's visionary adaptability and resilience withstands the test of time, steadfast in dedication to excellence of design and innovation with a focus on the future.



Surface Print

Surface Print is the oldest automated printing method still in use today which utilizes raised images on an engraved roller to transfer colors to a continuous reel of paper. A heavy lay-down of inks, wet-on-wet printing, and a less exact image outline give this type of printing a very distinct look that is impossible to duplicate with modern presses.

Look for this logo throughout the catalog to find Surface Print Designs.



York Defender has been successfully tested against microbes and germs with results upward of 90% effectiveness in reducing products surface concentrations over a 24-hour period, offering continual protection for on going peace of mind.

Look for this logo throughout the catalog to find York Defender designs.





BAMBOO HEMP BLEND

Authentic, wash-coated horizontal strips of bamboo and hemp are applied over a base of metallic foil and high gloss to create touches of shimmer in the pattern Bamboo Hemp Blend.



BAMBOO HEMP BLEND



NT6101



NT6102 - Metallic Accent
Shown on Opposite Page



NT6103 - Metallic Accent

No Repeat - Roll Width 36 in (91,44 cm) - Roll Length 24 ft (7,3 m)
Hemp and Bamboo on Non-Woven - Price Code F



©Design Copyright York Wallcoverings, Inc., All Rights Reserved.





METALLIC SCALLOP

The half-moon overlapping fans of the pattern Metallic Scallop create a field of color, accented with thin lines of raised liquid shimmer to emphasize its beautiful organic curves.



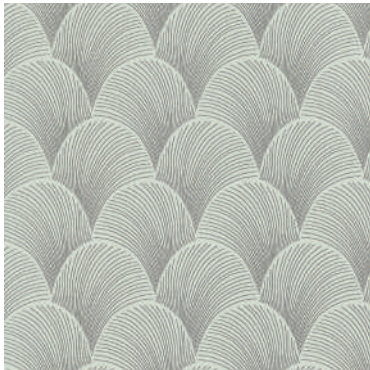
METALLIC SCALLOP



NT6104 - Metallic Accent



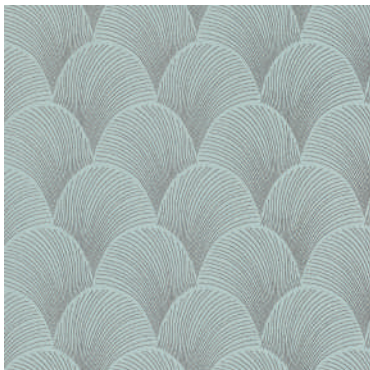
NT6105 - Metallic Accent



NT6106 - Metallic Accent



NT6107 - Metallic Accent



NT6108 - Metallic Accent



NT6109 - Metallic Accent
Shown on Opposite Page

Repeat 6.3 in (16 cm) - Roll Width 27 in (68,58 cm) - Roll Length 27 ft (8,2 m)
Raised Foil on Non-Woven - Price Code B



©Design Copyright York Wallcoverings, Inc., All Rights Reserved.



LAYERED LILY PADS - NT6111, NT6115, NT6114, NT6116, NT6113, NT6112

CANDICE OLSON NATURAL DISCOVERY

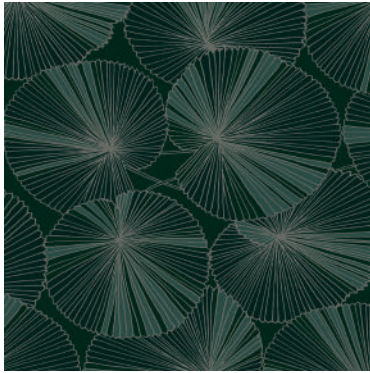


LAYERED LILY PADS

The circular leaves of this flowering aquatic herb emerge and float across the stillness of the water's surface in the pattern Layered Lily Pads.



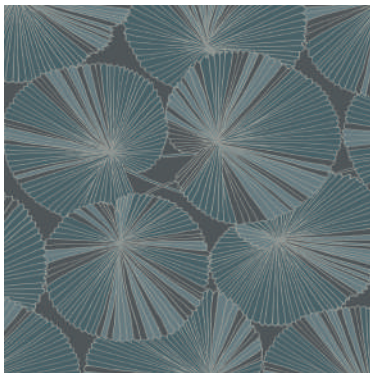
LAYERED LILY PADS



NT6111 - Metallic Accent
Shown on Opposite Page



NT6112 - Metallic Accent



NT6113



NT6114



NT6115



NT6116

Repeat 25.25 in (64,13 cm) - Roll Width 27 in (68,58 cm) - Roll Length 27 ft (8,2 m)
Non-Woven - Price Code B



©Design Copyright York Wallcoverings, Inc., All Rights Reserved.



INKY PALMS

Feathery fronds and weighted stems curtsy and bow in Inky Palm's calligraphy-inspired sketch of natural tropical leaves swaying in the breeze.



NT6121



NT6122



NT6123



NT6124 - Shown on Opposite Page



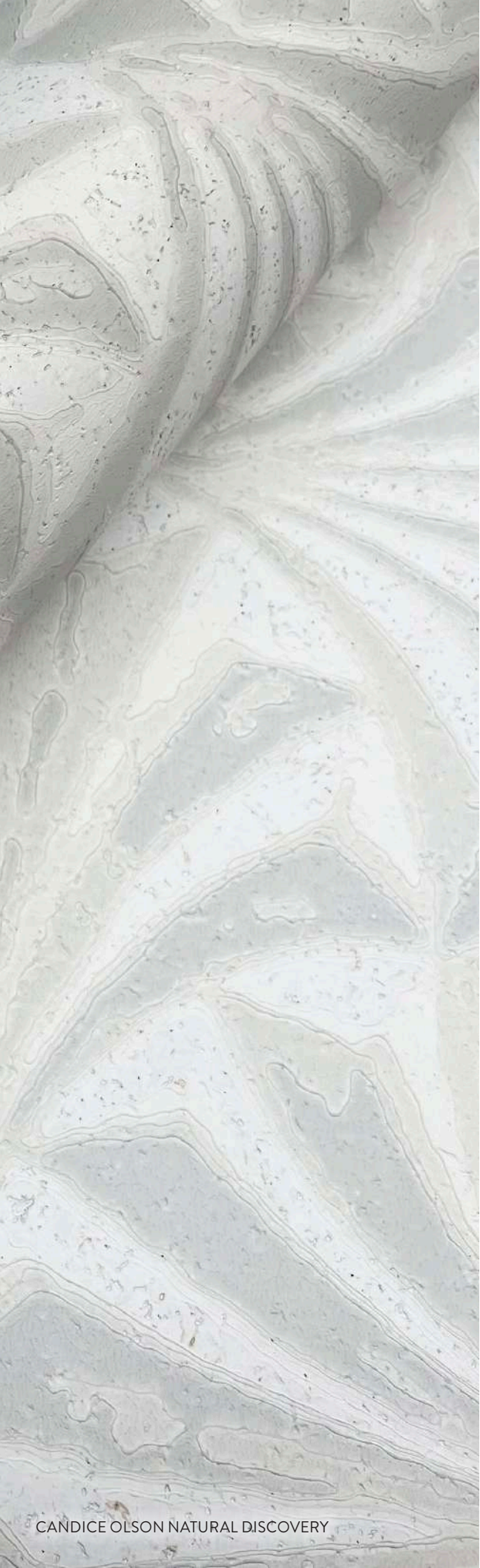
NT6125

Repeat 24 in (60,96 cm) - Roll Width 27 in (68,58 cm) - Roll Length 27 ft (8,2 m)
Non-Woven - Price Code A



©Design Copyright York Wallcoverings, Inc., All Rights Reserved.



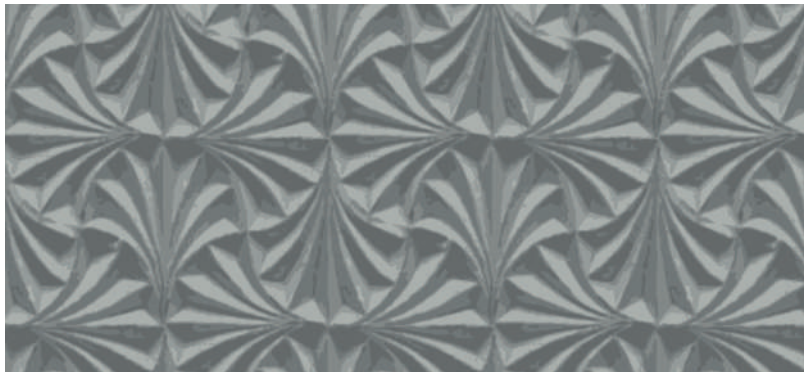


SCULPTED FANS

Inspired by the folds of washi paper and angled bamboo frames of historic Japanese sensu, the oversized raised arches of pattern Sculptured Fans become a sophisticated showpiece when rendered upon a canvas of sustainably harvested cork oak bark.



SCULPTED FANS



NT6127 - Shown on Opposite Page



NT6128



NT6129

Repeat 20.5 in (52,07 cm) - Roll Width 27 in (68,58 cm) - Roll Length 27 ft (8,22 m)

Cork on Non-Woven - Price Code E



Surface Print



©Design Copyright York Wallcoverings, Inc., All Rights Reserved.



TROPICAL CABANA

Painterly banana leaf palms and open-air gazebos set the stage for the colorful luxury resort feel of pattern Tropical Cabana.



NT6131



NT6132



NT6133



NT6134



NT6135 - Shown on Opposite Page



NT6136

Repeat 24 in (60,96 cm) - Roll Width 20.5 in (52,07 cm) - Roll Length 33 ft (10,1 m)
Non-Woven - Price Code A



©Design Copyright York Wallcoverings, Inc., All Rights Reserved.



DICOT LEAF

The branching veins of the Dicot Leaf pattern become a framework for small mosaics of variegated color that fill in and give dimension to this nature-inspired modern botanical pattern.



NT6141



NT6142 - Shown on Opposite Page



NT6143



NT6144



NT6145 - Metallic Accent

Repeat 24 in (60,96 cm) - Roll Width 20.5 in (52,07 cm) - Roll Length 33 ft (10,1 m)
Non-Woven - Price Code B



©Design Copyright York Wallcoverings, Inc., All Rights Reserved.



ELEVATED WAVES - NT6154, NT6151, NT6153, NT6155, NT6152

CANDICE OLSON NATURAL DISCOVERY

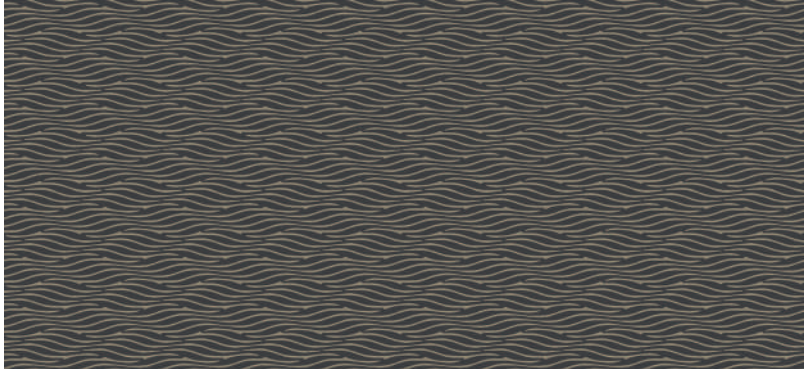


ELEVATED WAVES

The natural horizontal rhythm of Elevated Waves uses sculptured surface inks to define and deepen the dimensional all-over texture of this contemporary abstract. Earth tones and pearlescence emphasize the fluidity and motion of choppy surf and windswept waves.



ELEVATED WAVES



NT6151 - Shown on Opposite Page



NT6152



NT6153



NT6154 - Metallic Accent



NT6155

Repeat 25.25 in (64,13 cm) - Roll Width 27 in (68,58 cm) - Roll Length 27 ft (8,2 m)
Non-Woven - Price Code D



Surface Print

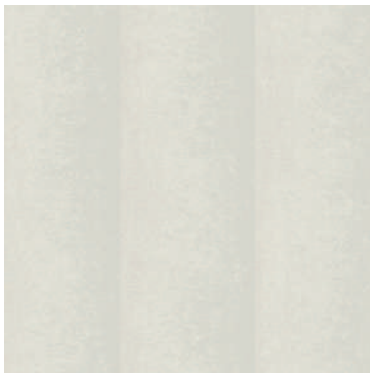


©Design Copyright York Wallcoverings, Inc., All Rights Reserved.



PARTICLE STRIPE

The monochromatic splatter of Particle Stripe provides a painterly transition between the two tonal, adjacent vertical colors. Earth and sky provide a natural palette punctuated by pearlescence and negative photo imaging.



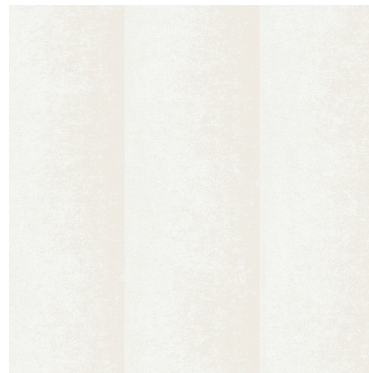
NT6161 - Shown on Opposite Page



NT6162



NT6164



NT6165 - Metallic Accent

Repeat 25.25 in (64,13 cm) - Roll Width 27 in (68,58 cm) - Roll Length 27 ft (8,2 m)
Non-Woven - Price Code A



©Design Copyright York Wallcoverings, Inc., All Rights Reserved.



DREAMLAND

Sinuuous swirls create an abstract of painterly color across an artistic backdrop in the pattern Dreamland.



NT6171



NT6172 - Shown on Opposite Page



NT6173



NT6174

Repeat 24 in (60,96 cm) - Roll Width 27 in (68,58 cm) - Roll Length 27 ft (8,2 m)
Non-Woven - Price Code A



© Design Copyright Candice Olson – All Rights Reserved.





ARTISTIC TIDES

Artistic Tides abstract colors and random drifting clouds of glass beads are an ode to the waves and dunes of desert and coastline as interpreted by a painter's romantic vision.



ARTISTIC TIDES



NT6175 - Glass Bead



NT6176 - Glass Bead



NT6177 - Glass Bead
Shown on Opposite Page

Repeat 25.25 in (64,13 cm) - Roll Width 27 in (68,58 cm) - Roll Length 27 ft (8,22 m)
Non-Woven - Price Code E



©Design Copyright York Wallcoverings, Inc., All Rights Reserved.





ABALONE FANS

Watercolor demilune shapes create layers of soft, natural semicircles on the pattern Abalone Fans.



ABALONE FANS



NT6181 - Metallic Accent



NT6182 - Metallic Accent



NT6183 - Metallic Accent



NT6184 - Metallic Accent



NT6185 - Metallic Accent
Shown on Opposite Page

Repeat 24 in (60,96 cm) - Roll Width 27 in (68,58 cm) - Roll Length 27 ft (8,2 m)
Non-Woven - Price Code A



©Design Copyright York Wallcoverings, Inc., All Rights Reserved.





FINE LINE GEOMETRIC

Meandering deeply textural lines form a flexible intermix of abstract beauty and organic shape within the motion of pattern Fine Line Geometric.



FINE LINE GEOMETRIC

Meandering deeply textural lines form a flexible intermix of abstract beauty and organic shape within the motion of pattern Fine Line Geometric.



NT6191



NT6192



NT6193 - Shown on Opposite Page



NT6194



NT6195



NT6196

Repeat 25.25 in (64,13 cm) - Roll Width 27 in (68,58 cm) - Roll Length 27 ft (8,2 m)
Non-Woven - Price Code D



©Design Copyright York Wallcoverings, Inc., All Rights Reserved.

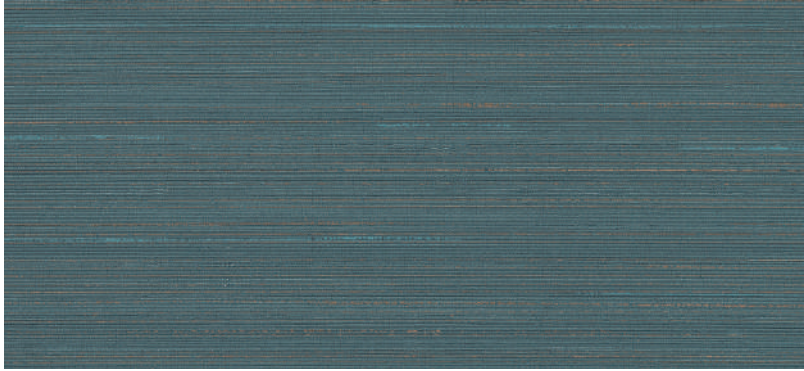




QUIET VISTA

The iconic sheen and silky strands of hand-woven abaca inspire Quite Vista's high-performance vinyl interpretation of natural grasscloth.

QUIET VISTA



NT6201N - Metallic Accent



NT6202N - Metallic Accent



NT6203N - Metallic Accent
Shown on Previous Page



NT6204N - Metallic Accent



NT6205N - Metallic Accent



NT6206N - Metallic Accent



NT6207N - Metallic Accent



NT6208N - Metallic Accent



NT6209N - Metallic Accent

No Repeat - Roll Width 27 in (68,58 cm) - Roll Length 27 ft (8,2 m)
Type II (20 oz.) Non-Woven Vinyl Wallcovering - Price Code C
Also available in 54" Width. Please see last page for more information.



©Design Copyright York Wallcoverings, Inc., All Rights Reserved.







NT6129, NT6184, NT6151, NT6133, NT6175

CANDICE OLSON NATURAL DISCOVERY

Bamboo Hemp Blend _____ 4-7

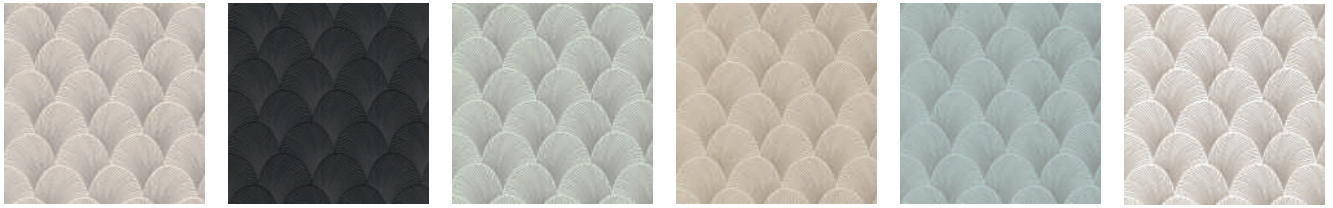


NT6101

NT6102

NT6103

Metallic Scallop _____ 8-11



NT6104

NT6105

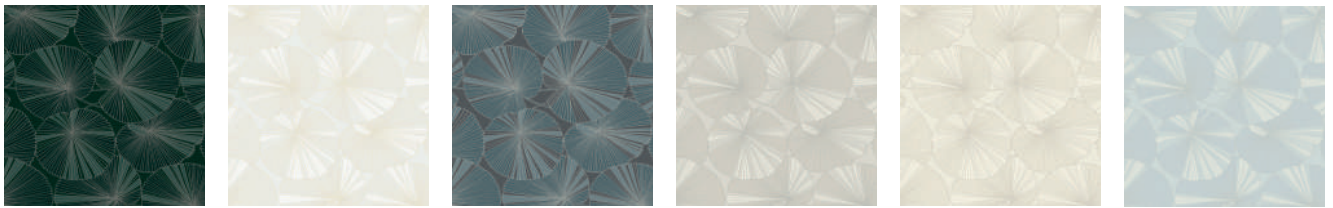
NT6106

NT6107

NT6108

NT6109

Layered Lily Pads _____ 12-15



NT6111

NT6112

NT6113

NT6114

NT6115

NT6116

Inky Palms _____ 16-17



NT6121

NT6122

NT6123

NT6124

NT6125

Sculpted Fans _____ 18-21



NT6127

NT6128

NT6129

Tropical Cabana

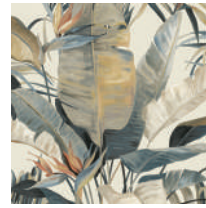
22-23



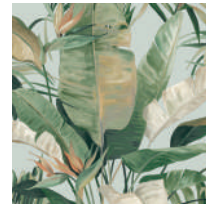
NT6131



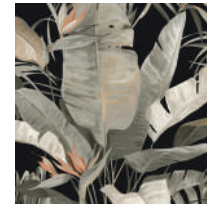
NT6132



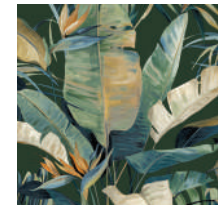
NT6133



NT6134



NT6135



NT6136

Dicot Leaf

24-25



NT6141



NT6142



NT6143



NT6144



NT6145

Elevated Waves

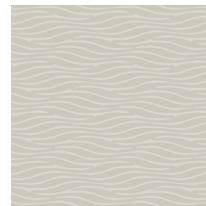
26-29



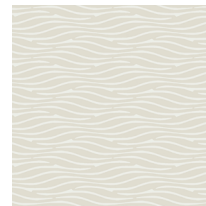
NT6151



NT6152



NT6153



NT6154



NT6155

Particle Stripe

30-31



NT6161



NT6162



NT6164



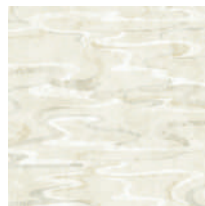
NT6165

Dreamland

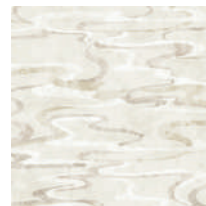
32-33



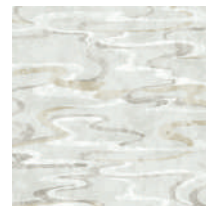
NT6171



NT6172



NT6173



NT6174

Artistic Tides 34-37



NT6175

NT6176

NT6177

Abalone Fans 38-41



NT6181

NT6182

NT6183

NT6184

NT6185

Fine Line Geometric 42-45



NT6191

NT6192

NT6193

NT6194

NT6195

NT6196

Quiet Vista 46-51



NT6201N

NT6202N

NT6203N

NT6204N

NT6205N

NT6206N



NT6207N

NT6208N

NT6209N

candice OLSON

NATURAL DISCOVERY

ABOUT THE COLLECTION

Finding beauty in this extraordinary organic world.

ABOUT CANDICE OLSON

The Candice Olson aesthetic is built upon the love of reinterpreted classics. This contemporary take on tradition creates a look that is current, yet timeless. It is the essence of both beautiful design and a beautifully designed home.

PRODUCT TYPE

This collection features multiple product types. Product types are identified on the backprint of each pattern.

NON-WOVEN: Non-woven is a blend of compressed natural cellulose and synthetic fibers that forms a high-quality wallcovering base. It does not expand and contract with moisture yet is breathable and resistant to tearing. Seams match simply, with paste being applied either to the wallpaper back or directly to the wall. Non-woven hangs and repositions with ease and removes in full strips. Once applied, the finish has a textural hand associated with upmarket installations.

VINYL: Printed on a vinyl surface with non-woven substrate backing, this highly durable wallpaper smooths effortlessly, is easy to remove, and meets Type II requirements of CCC-W-408A.

ROLL SIZE

Unless noted with an asterisk (*), all double rolls of wallpaper in this collection are:

27" wide x 27' long totaling 60.8 sq. ft. (68,5 cm x 8,2 m or 5,6 m²)

*20.5" wide x 33' long totaling 56.4 sq.ft. (52,1 cm X 10,1 m or 5,3 m²).

**36" wide x 24' long totaling 72 sq. ft. (91,4 cm x 7,3 m or 6,6 m²).

***27" wide x 26.9' long totaling 60.5 sq. ft. (68,5 cm x 8,1 m or 5,5 m²).

****27" or 54" width. 27" Wallcovering is packaged in double rolls 27" wide x 27' long totaling 60.8 sq. ft. (68,5 cm x 8,2 m or 5,6 m²). When ordering 54" wallcovering please drop the "N" following the pattern number to denote 54" wide product. 54" wallcovering is sold by the linear yard and packaged in 30 linear yard bolts (137,16 cm x 27,4 m).

IMPORTANT

When you receive your order, please check to make sure that the design, color and quantity are correct. Also, please examine the wallcoverings for imperfections before cutting and hanging. We will replace defective merchandise, but will not be responsible for labor costs. Discolorations caused by unneutralized plaster or improper wall preparation are also not covered by this warranty.

RETURNS

Wallcovering returns must be pre-authorized and are subject to a restock handling charge plus return freight. All returns must be made within 60 days of our shipping date. Cut rolls are not acceptable for credit.

NOTICE

All designs and graphic images contained herein, are Copyright 2024 York Wallcoverings, Inc., York, PA U.S.A. All rights reserved.

 <ul style="list-style-type: none"> • Low VOC • No Ozone Depletion • No Cadmium or Mercury • Smokeless, Water Based Inks • Managed Renewable Forests 	 <p>USGBC MEMBER</p> <p>York Wallcoverings is a proud member of the U.S. Green Building Council.</p> <p>"The 'USGBC Member Logo' is a trademark owned by the U.S. Green Building Council and is used by permission. The logo signifies only that York Wallcoverings is a USGBC member; USGBC does not review, certify or endorse the products or services offered by its members".</p>	 <p>Find a paper hanger at www.wallcoveringinstallers.org</p>
--	--	--

EXPLANATION OF SYMBOLS

WASHABILITY/SPONGEABILITY



washable



extra washable



scrubbable



spongeable at time of hanging

COLOR FASTNESS OF LIGHT



moderate



satisfactory



good



very good

PATTERN MATCH



random match



straight match



drop match



reverse alternate lengths

MEANS OF APPLICATION



paste the paper



paste the wall



prepast



spray and hang



peel and stick

METHOD OF REMOVAL



strippable



peelable



wet removable



YORKWALLCOVERINGS.COM

MANUFACTURED
IN YORK
PENNSYLVANIA, 17404 U.S.A.
MADE IN U.S.A.

